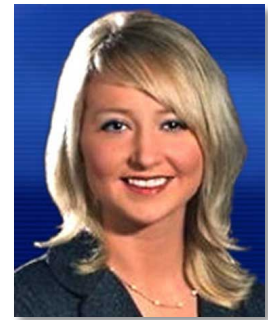


Emily Rittman

Represented by The NWT Group
817.987.3600 NancyShafran@NWTgroup.com



Experience

General Assignment Reporter, KCTV, Kansas City, MO

July 2012 – Present

- Enterprise original, lead story ideas
- Travel to cover large breaking news events including Moore, OK tornado
- Use computer assisted reporting to track court cases and local politics
- Write additional content for website and social media

General Assignment Reporter/Crime and Courts, KSPR, Springfield, MO

April 2007 – July 2012

- Reported live breaking news and enterprised hard leads daily
- Uncovered relevant news and secured exclusive interviews
- Used social networking to gain viewers and advance newscasts
- Developed sources willing to tip off information in advance
- Produced web content to supplement daily news coverage
- Wrote and edited daily news stories to deadline on Grass Valley
- Shot video when photographers are not available
- Daily checks of numerous open records
- Fill-in anchor

General Assignment/Crime Reporter/Fill-in Anchor, KQ2, St. Joseph, MO

April 2006 – April 2007

- Shot, wrote and edited daily packages on Avid iNews and Sony Vegas
- Worked crime beat by checking reports daily in person and online
- Acted as assignment editor for weekend newscasts
- Fill-in anchor and produced weekend newscasts

Morning Show Producer, KRCG, Jefferson City, MO

September 2005 – April 2006

- Revamped repetitive two hour morning show
- Made gatekeeper decisions on breaking news coverage
- Produced fast paced and informative content
- Made transition to tape-less, robotic camera newscast
- Trained the station's first assistant morning producer
- Daily beat calls to gain content

Education

Missouri State University

2005

Broadcast Journalism Major, Criminology Minor, Magna Cum Laude Graduate

Additional Training

- National Press Photographers Association week long workshop
- The Poynter Institute, RTNDF ethics conference on pressures of new technology with a live focus group

